



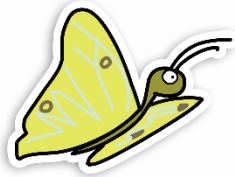
A self-led Toddler Trek

at Warwickshire Moor,
Tamworth B77 3LP



Follow the self led trail around the boardwalk of Warwickshire Moor, stopping at each point for a different activity. Recommend time approx. 30-45 minutes.





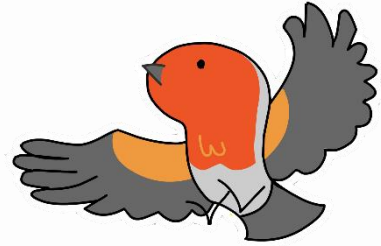
A self-led Toddler Trek

at Warwickshire Moor, Tamworth



Additional items we recommended:

- Paper, tape or glue- leaf picture
- Elastic band or pipe cleaner- fairy
- Bird ID spotter sheet



Please follow government guidelines and maintain social distancing while on the site.

Trail activities:

1 Well who's that trip trapping over my bridge? Stamp your feet to scare away any trolls.



5 Skip along to find the bench. Rest, snack or play. How about spotting shapes in the clouds?

2 Can you collect fallen leaves to make a leaf troll picture? On paper or the floor.

6 See how the boardwalk curves and swoops? Can you pretend you're a swooping bird?

3 Away from trolls now, into the realm of fairies. Can you make a fairy? Find a stick, attach some leaves for wings, dresses, hair with your elastic band.

7 Head on down to river view. Looking eyes at the reeds, can you spot any birds?

4 Over the stream now, can you see where it comes from? Maybe fairy magic from under the ground?

8 Hear the reeds swish and sway. I wonder what creatures are at play? Frogs? I agree, well hop along and show me.

