



A self-led Wildfamilies Walk

at Town Wall, Tamworth
B77 5HF

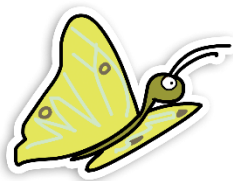


Follow the self led trail around the terrific Town Wall, stopping at each point for a different activity. Recommend time approx. 30-45 minutes.



Tamworth
Borough Council





A self-led Wildfamilies Walk

at Town Wall, Tamworth



Additional items we recommended:

- Paper, crayon or pencil- bark rubbing
- Tree Id Guide
- Bird Id Guide



Please follow government guidelines and maintain social distancing while on the site.

Trail activities:

1 Magic well, magic well, can you think of a spell? Find a stick to be your magic wand.



5 Can you run down the path, kicking up the leaves with a laugh?

2 A pile of bricks you say, did a goblin take a house away? Can you make up a fairy tale story about what happened?

6 Look right, that's where you started, hope your magic wand hasn't darted.

3 Turn right down the path, do you see a big Oak tree, just one not three. Can you take a bark rubbing? How does the bark feel?

7 Take a moment to check the weather, is it rainy, windy, sunny? lets look together. Are the trees still or swaying?

4 Trees with trunks of speckled white, silver birches, they won't bite. Can you take a bark rubbing here too. Are they the same?

8 Aim for the grass, the trees, the sky. What do you see if you look high? Can you see any birds? Perhaps close your eyes to take a listen too.

