

Tameside Wildlife

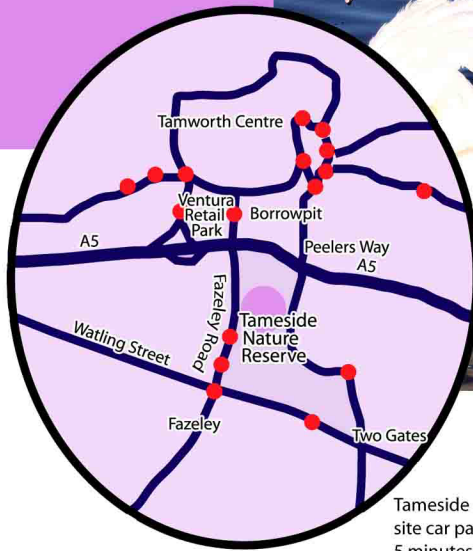
Conservation Group

Tameside Wildlife Conservation Group was formed in March 2006 under the auspices of Staffordshire Wildlife Trust through the Wild About Tamworth project, supported by Tamworth Borough Council and Staffordshire Environmental Fund.

Our aims are to promote and enhance the area for wildlife and people.

We meet on the reserve the second Sunday of each month. So if you are interested why not come along. Want to know more contact Staffordshire Wildlife Trust or email us : TWCG@aol.com

Location

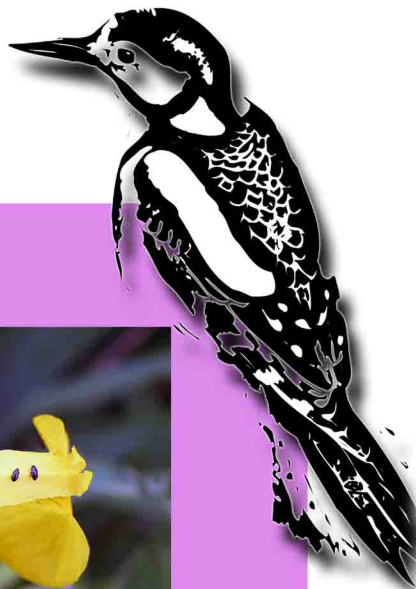


Tameside Nature Reserve has no on site car park. Ventura Retail Park is just 5 minutes walk away. The main entrance is north of Meadowbank.

Tameside

Nature Reserve

Fazeley, Tamworth



wildlife Conservation Group



Staffordshire Wildlife Trust manages over 2,000 acres of land within the County for the benefit of wildlife and people. We are a registered charity (No.259558) whose income depends largely on the support of our 13,000 plus members. If you care about wildlife and the environment, then why not join today? To join or for other information, contact : Staffordshire Wildlife Trust, The Wolsley Centre, Wolsley Bridge, Stafford, ST17 0WT. Tel : 01889 880100 Email : info@staffs-wildlife.org.uk www.staffs-wildlife.org.uk



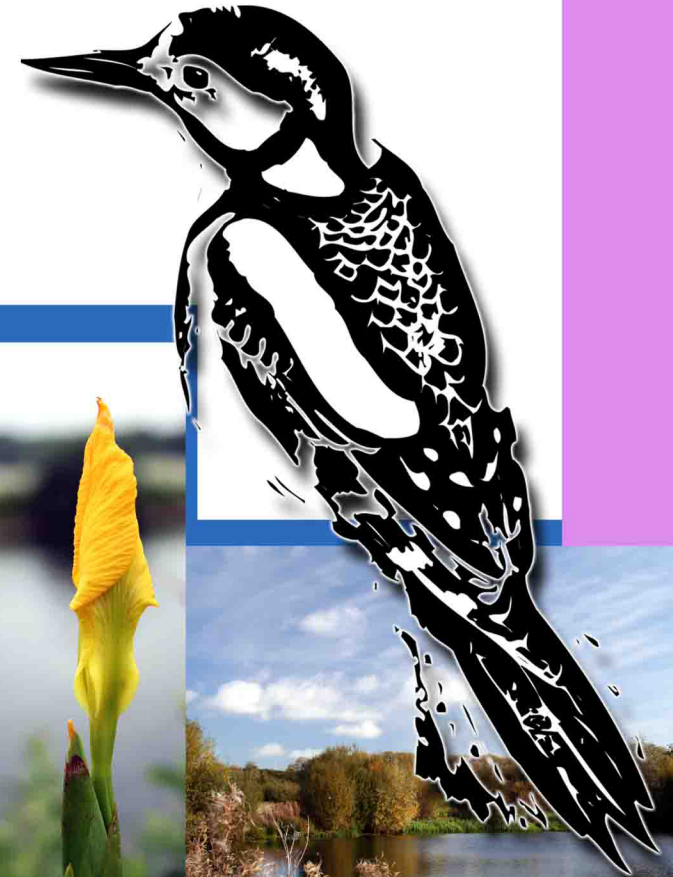
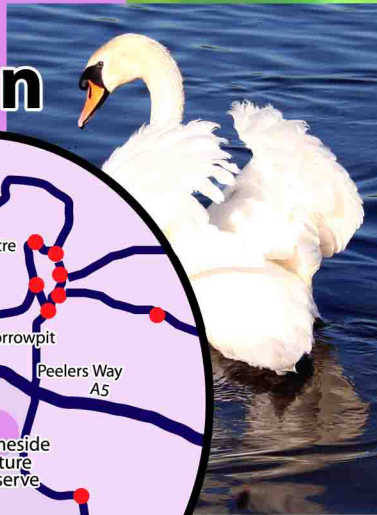
Tamworth Borough Council are the landowners of the site and are working in partnership with the Wildlife Trust to support the community in improving the environment for both people and wildlife. Tamworth Borough Council, Marmion House, Lichfield Street, Tamworth, B79 7BZ Tel : 01827 709709 Email : enquiries@tamworth.gov.uk www.tamworth.gov.uk

Leaflet produced with support from Design /Photographs Mandy Austin



Tameside

<http://beehive.thisisstaffordshire.co.uk/tameside>



Tameside Nature Reserve

Tameside Lake

Tameside lake is a man made lake created around 15 years ago. Located on the Fazeley Road between Tamworth and Fazeley. On its Eastern side lies the River Tame and the Coventry Canal to the south. The lake has four small islands that provide valuable nesting sites for bird life.

Lapwing

Lapwings are a distinctive black and white birds that love wet, open areas of short grass with no trees. When frightened they swoop up into the air and utter a whistling 'pee-wit' call. If this happens more than two or three times in a short period during the breeding season they will abandon their eggs.

Water Vole

Active during the day, water voles are most likely to be seen swimming or running around riverbanks busily collecting grasses, sedges and reeds to fill their underground larders. Recognisable by its chubby face, small ears and glossy rounded body, the water vole is quite distinct from the brown rat with which it is sometimes confused.

Common Frog

Frogs emerge from hibernation in late February, and spawning usually takes place in early March. The spawn is laid in clumps and typically consists of 300-400 gelatinous eggs containing black embryos with a white spot. The very young tadpoles are black but soon become speckled brown in colouration making them distinguishable from the permanently black tadpoles of the common toad.

Dragon and Damselflies

The area of open water provide dragon and damselflies with an excellent habitat for breeding and hunting. Species you may see include common hawkler and banded damselfly.



Unsurfaced Path